

Patterson Creek near Richvale Community Centre (Grist Mill Park) Sanitary Infrastructure Protection Project - Site I-075/P-1005 (YOR-009)

Site I-075 and Site P-1005 are located just southwest of Grist Mill Park, adjacent to Patterson Creek, in the Town of Richmond Hill (**Figure 1**). The project area contains two exposed sanitary maintenance hole chimneys on the left banks along the watercourse (**Figure 2** and **3**). The sanitary line and associated infrastructure is owned by the Regional Municipality of York. For each site, a slight channel realignment away from the sanitary line are proposed with associated vegetated stone treatments to protect the sanitary infrastructure from further degradation.

These two sites are currently in the planning and design stage of development with remedial works planned for the summer 2019. *A project webpage will be posted closer to the implementation date to provide important project and construction notices.*

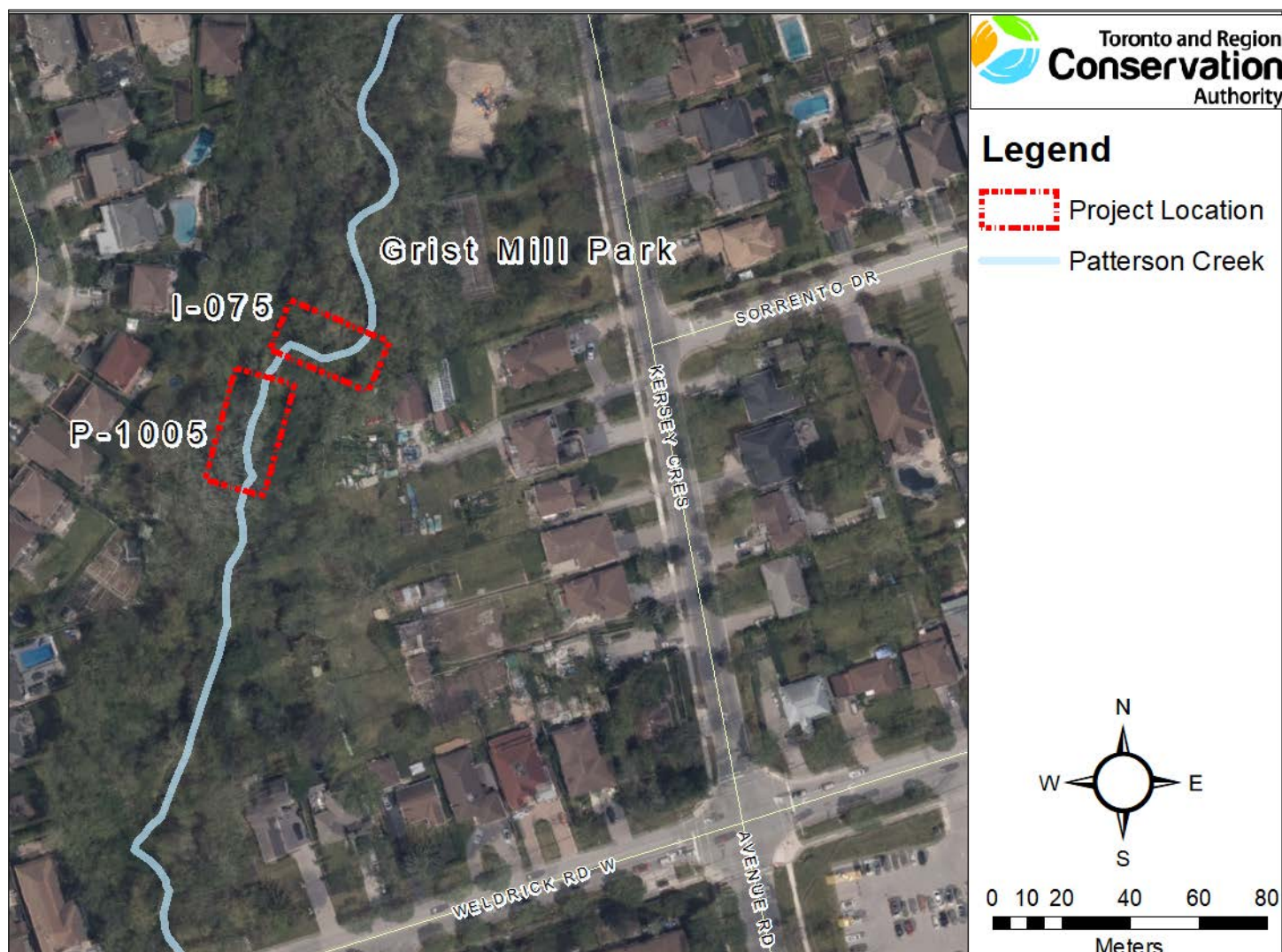


Figure 1. Site P-1005 & Site I-075 project locations. *Source: TRCA, 2018.*



Figure 2. Current conditions at Site I-075. *Source: TRCA, 2018.*



Figure 3. Current conditions at Site P-1005. *Source: TRCA, 2018.*