

Patterson Creek near Richvale Community Centre Sanitary Infrastructure Protection Project – Site P-107 & Site I-070 (YOR-008)

Site P-107 and Site I-070 are located along Patterson Creek, adjacent to a trail within Richvale Athletic Park behind the Richvale Community Centre and St. Charles Garnier School, in the Town of Richmond Hill (**Figure 1**). The Regional Municipality of York's sanitary line is in close proximity to the right bank at Site P-107 and is at risk of exposure if the bank continues to erode. Remedial works at Site P-107 will involve a slight channel re-alignment, as well as the construction of a stone riffle and vegetated stone revetment along the right bank (**Figure 3**). The sanitary line intersects the watercourse at Site I-070 and is at risk of exposure due to channel downcutting. A stone riffle and concrete encasement of the sanitary line is proposed at this site to reduce the risk of future exposure (**Figure 3**).

These two sites are currently in the planning and design stage of development with remedial works planned for the summer 2019. A project webpage will be posted closer to the implementation date to provide important project and construction notices.

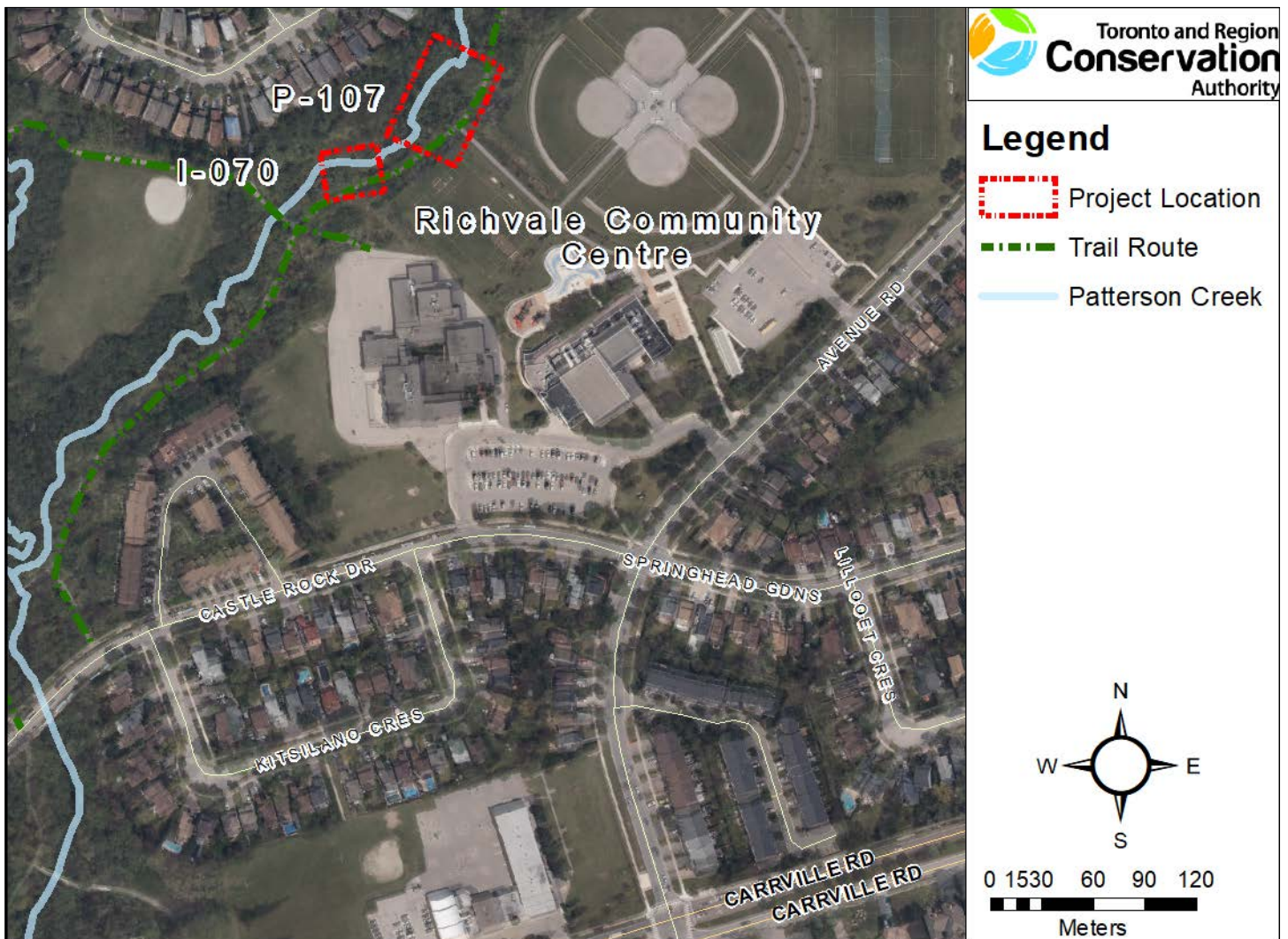


Figure 1. Site P-107 & Site I-070 project locations. Source: TRCA, 2018.



Figure 2. Current conditions at Site P-107. *Source: TRCA, 2018.*



Figure 3. Current conditions at Site I-070. *Source: TRCA, 2018.*