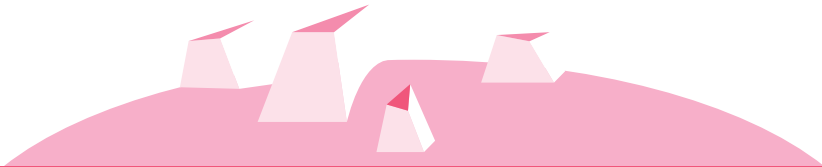
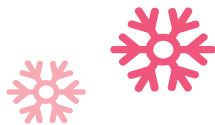


SOLUTION

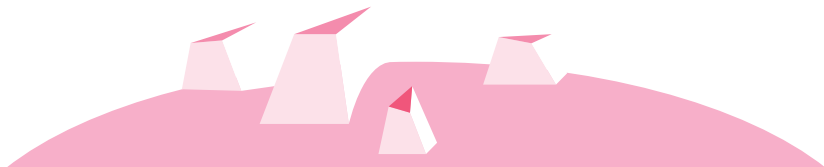
GIS and GPS can be used to determine the safest and least disruptive routes through Arctic waters. Ships and ice can be monitored through the use of GPS and remote sensing. GIS can be used to recommend areas that should be protected.

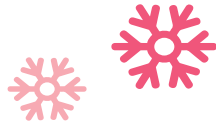




SOLUTION

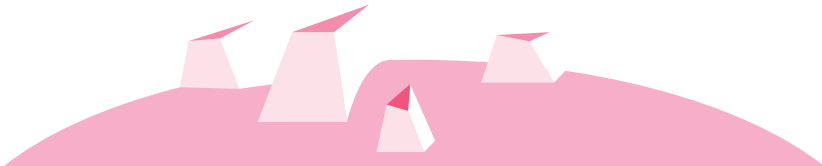
On peut utiliser le SIG et le GPS pour déterminer les itinéraires les moins perturbateurs et les plus sûrs à travers les eaux arctiques. On peut surveiller les navires et les glaces grâce au GPS et à la télédétection. Le SIG peut servir à déterminer les zones devant être protégées.

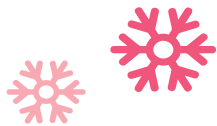




SOLUTION

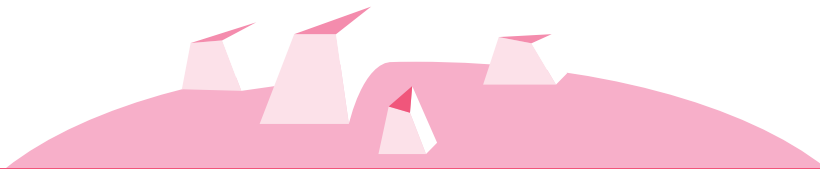
Levels of ice can be monitored and tracked by using remote sensing, GPS and GIS technologies.

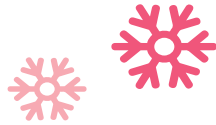




SOLUTION

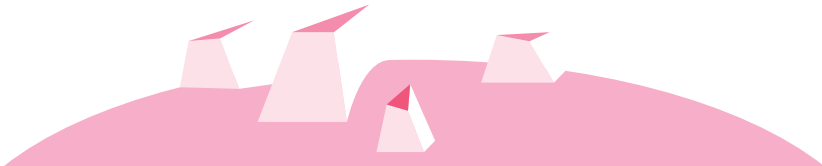
On peut utiliser des drones pour évaluer les populations de baleines et le SIG pour cartographier leur population, les tendances historiques et leurs aires de répartition.

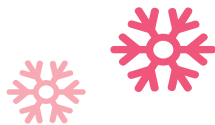




SOLUTION

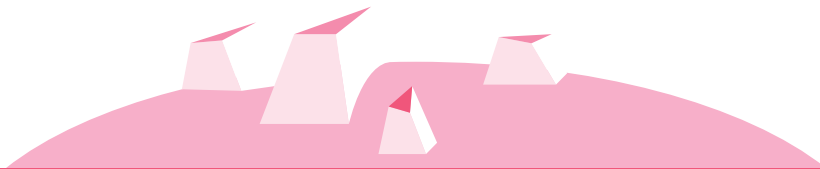
Red and Arctic foxes can be collared and tracked using GPS. Maps of new animal ranges can be made using GIS.

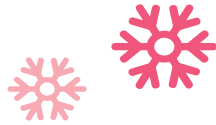




SOLUTION

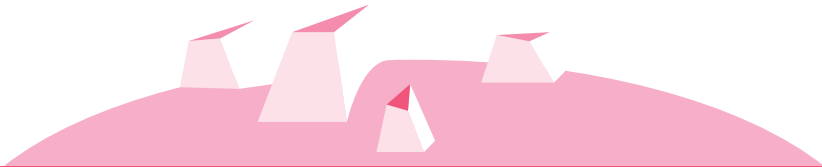
On peut mettre un collier aux renards arctiques et renards roux et les suivre avec un GPS. On peut réaliser des cartes des nouvelles aires de répartition de ces animaux grâce au SIG.

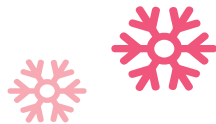




SOLUTION

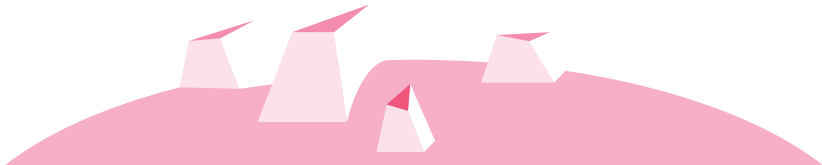
Drones can be used to assess whale populations, and GIS can be used to map out population, historical trends and ranges of whales.





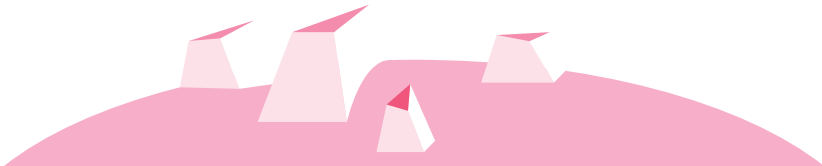
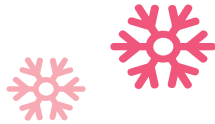
SOLUTION

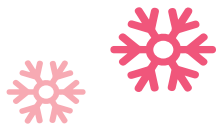
On peut surveiller et suivre les niveaux de glace grâce à la télédétection, au GPS et au SIG.



SOLUTION

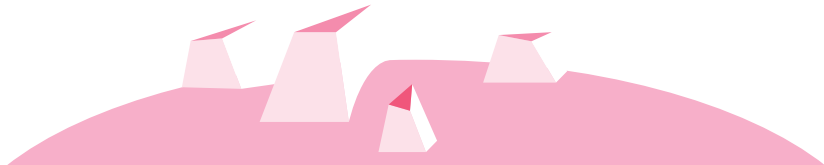
GIS can be used to map out changes in climate. GIS can also be used to predict where organisms will relocate if changes in ocean currents do occur.

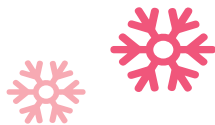




SOLUTION

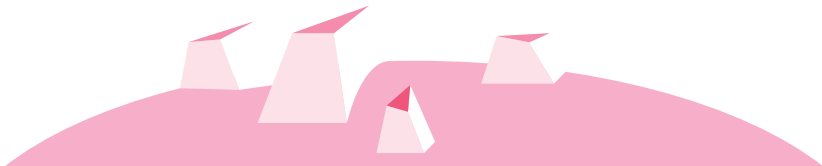
On peut utiliser le SIG pour cartographier les changements climatiques ainsi que pour prédire où se déplaceront les organismes en cas de modifications des courants marins.

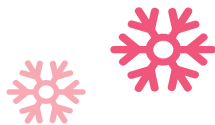




SOLUTION

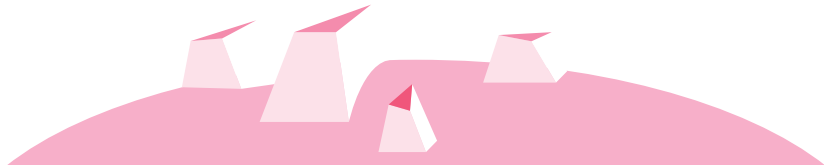
GIS can be used to make models of rising sea levels. GIS can also be used to find the best areas for relocation of coastal communities.

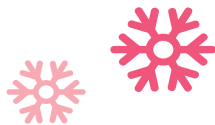




SOLUTION

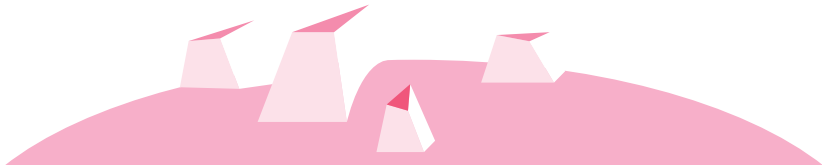
Le SIG peut servir à faire des modèles de la hausse du niveau des eaux et à trouver les meilleurs sites pour relocaliser les collectivités vivant sur les côtes.

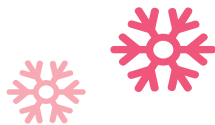




SOLUTION

Remote sensing, GIS and GPS can be used to monitor sea ice formation and to track and monitor bears. GIS can be used to find suitable relocation areas for nuisance bears.





SOLUTION

La télédétection, le SIG et le GPS peuvent servir à surveiller la formation de glace de mer et à étudier et à suivre les ours. Le SIG serait utile pour trouver de nouveaux habitats pour les ours devenus des nuisances.

